

**All-Payer Claims Database  
(APCD) of Texas  
Submitter Feedback  
Forum**

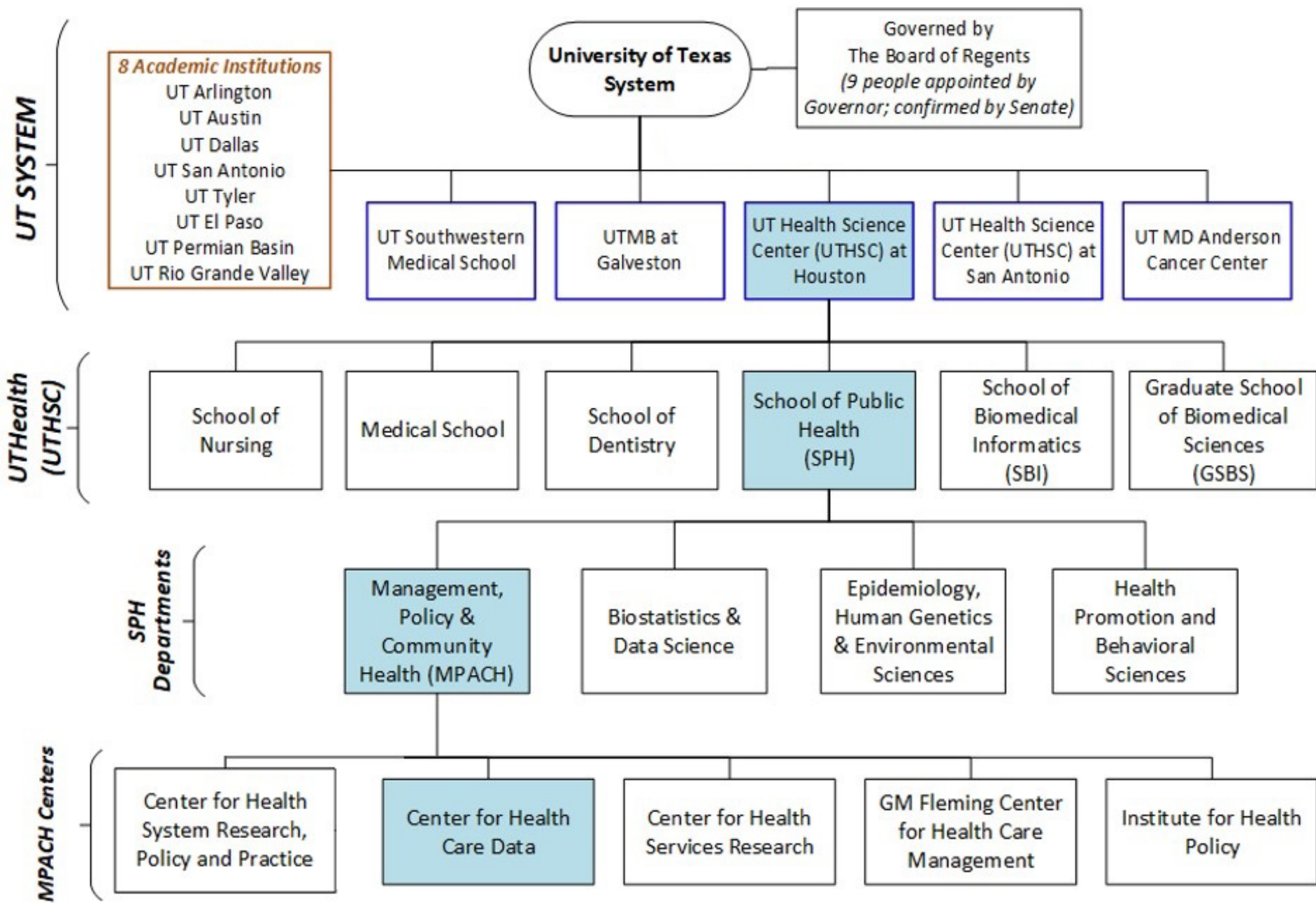
UTHealth School of Public Health  
Center for Health Care Data

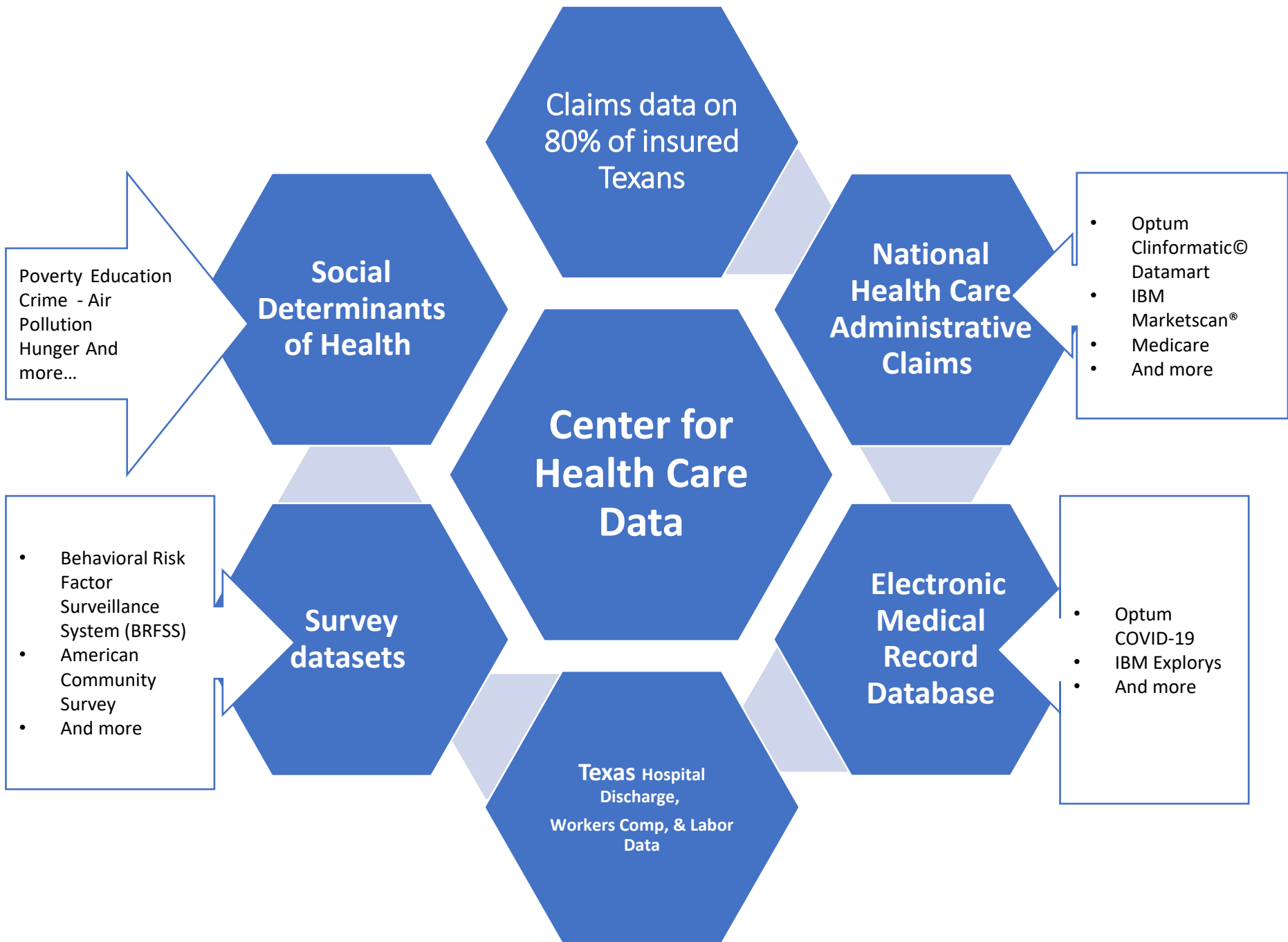
November 18, 2022

# Welcome!

---

- ◆ Welcome and Housekeeping
  - ◆ Thank You!
  - ◆ Please place your audio on mute.
  - ◆ Slides and notes will be made available on our website
- ◆ Submitter Forum Schedule
- ◆ Agenda
  - ◆ Introduction to UTHealth – CHCD – and TX-APCD Team
  - ◆ Overview
  - ◆ Submitter Feedback and Questions
    - ◆ Please submit questions in the chat





# Welcome!

---

- ◆ Center for Health Care Data
  - ◆ Co-Directors
    - ◆ Dr. Trudy Krause
    - ◆ Dr. Cecilia Ganduglia Cazaban
- ◆ TX-APCD Staff
  - ◆ Lee Spangler, Executive Director
  - ◆ Jonathan D. York, Senior Program Manager
  - ◆ Joseph Harrison, Data Manager
  - ◆ Jodie Nassar, Manager, Data Operations

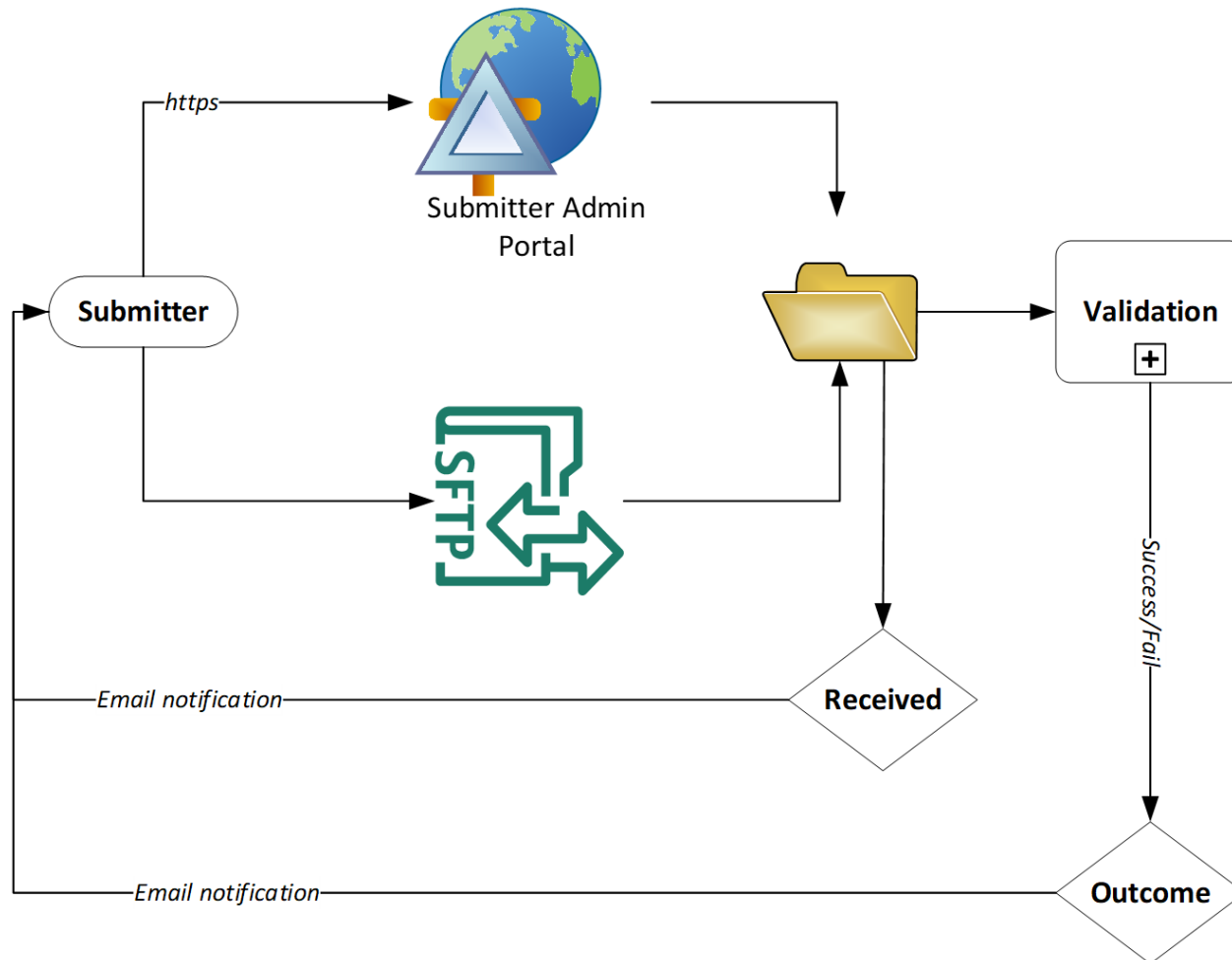
## How to Get Help

---

- ◆ Texas APCD Website: <https://go.uth.edu/txapcd>.
  - ◆ Common Data Layout (CDL)
  - ◆ Data Submission Guide (DSG)
  - ◆ Technical Guide
  - ◆ FAQs
- ◆ Questions or Problems, please submit a ticket going forward:
  - ◆ TXAPCD.ORG > Help > My Tickets > New Ticket
- ◆ Registration finalized when you receive:
  - ◆ *Submitter Code*
  - ◆ *Payor Code*
  - ◆ *Encryption Key*

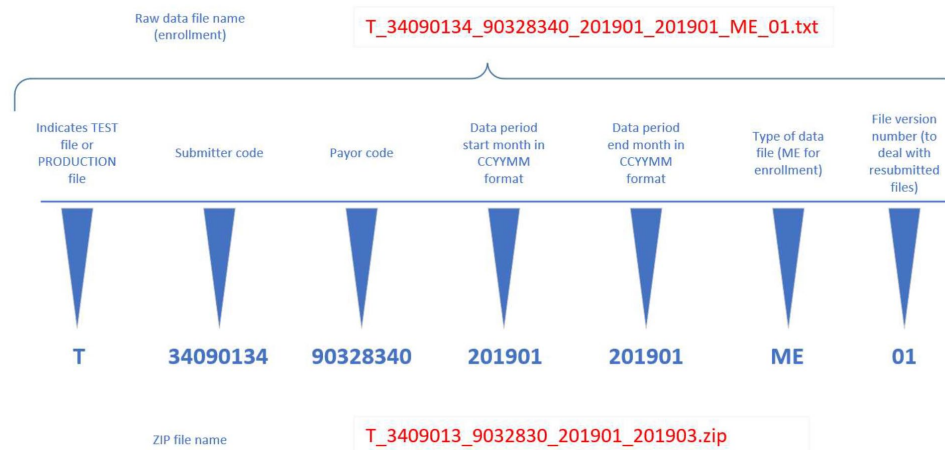
# TESTING

- ◆ Overview of flow in section 2.5 of the Technical Guide



# PRECONDITIONS FOR TESTING

- ◆ TACC account (at least one)
  - ◆ MFA configured on TACC account used to submit
- ◆ Codes required for data file generation
  - ◆ Submitter code (organization identifier – up to 8 characters)
  - ◆ Payor code (unique number – 8 digits starting with 2)
- ◆ Encryption code
  - ◆ Must be used to encrypt file before submitting
- ◆ Correct file names (refer to section 5.1 of the Technical Guide)





## GENERATING DATA FILES

---

- ◆ Use the correct CDL at <https://go.uth.edu/txapcd>
- ◆ Make sure that each data file has a header and a trailer record and that the information in these records are consistent with the data in the file
- ◆ ALL fields must be accounted for in each data file
  - ◆ Eligibility/enrollment – 108 fields
  - ◆ Provider – 30 fields
  - ◆ Medical – 165 fields
  - ◆ Pharmacy – 73 fields
  - ◆ Dental – 88 fields
- ◆ Use consecutive “|” pipes to indicate null values (see section 5.2 in Technical Guide)
- ◆ Follow CDL guidelines on the formatting of data in each field (for example, money values should be formatted in cents - \$100.45 should be sent as 10045 – no dollar sign, no comma, no period)

## SFTP CONNECTION INFORMATION

---

- ◆ Can be found on page 32 of Technical Guide
  - ◆ Protocol: SFTP
  - ◆ Host: `secure.corral.tacc.utexas.edu`
  - ◆ Port: 22 (default)
  - ◆ User: [TACC user id]
  - ◆ Password: [TACC user password]
  - ◆ TACC token: [code from MFA app]
  - ◆ Local directory: [location on your local network]
  - ◆ Remote directory: `/corral-secure/projects/APCD/submissions`
  
- ◆ ALL SUBMITTERS UPLOAD FILES TO THE SAME DIRECTORY

## WHAT TO EXPECT AFTER SUBMITTING TEST FILE

---

- ◆ Two emails:
  - ◆ TX-APCD: Submission Receipt Notification – accepted/rejected
    - ◆ Validates the structure of the archive and reconciles with registration information
  - ◆ TX-APCD: Submission Validation Notification – passed/failed
    - ◆ Validates the structure of each data file and validates the actual data in each file
    - ◆ Generates up to six reports (html files attached to email)
      - ◆ File consistency (header/trailer validation)
      - ◆ Eligibility/enrollment
      - ◆ Provider
      - ◆ Medical
      - ◆ Pharmacy
      - ◆ Dental

# FORMAT OF THE VALIDATION REPORT



great\_expectations

[Home](#) / [Validations](#) / [provider\\_suite](#) / 20221111-152425-[REDACTED]-202210\_202210\_provider\_suite / 2022-11-11T15:26:09Z

## Expectation Validation Result

Evaluates whether a batch of data matches expectations.

### Actions

Validation Filter:

Show All

Show Failed Only

### Table of Contents

[Overview](#)

[provider\\_specialty](#)

### Overview

Expectation Suite: [provider\\_suite](#)

Data asset: None

Status: ✘ Failed

### Statistics

Evaluated Expectations	44
Successful Expectations	43
Unsuccessful Expectations	1
Success Percent	≈97.73%

[Show more info...](#)

**provider\_specialty**

Status	Expectation	Observed Value				
<span style="color: red;">✘</span>	<p>values must never be null.</p> <p><b>1787 unexpected values found. ≈36.69% of 4871 total rows.</b></p> <table border="1"> <tr> <th colspan="2">Unexpected ValueCount</th> </tr> <tr> <td>null</td> <td>1787</td> </tr> </table>	Unexpected ValueCount		null	1787	≈63.313% not null
Unexpected ValueCount						
null	1787					

## Questions?

---

- ◆ Questions -
  - ◆ Please submit via chat.